



CITY OF OREGON CITY NATURAL RESOURCES COMMITTEE AGENDA

Community Room, Community Development Building,
695 Warner Parrott Rd, Oregon City, OR
Tuesday, May 13, 2025 at 6:30 PM

Ways to participate in this public meeting:

- Attend in person, location listed above. Please see the public comment guidelines below.
- Attend the livestream of the meeting on the City's YouTube Channel:

<https://www.youtube.com/user/CityofOregonCity>

- Register to provide electronic testimony (email pwalter@orcity.org by 3:00 PM on the day of the meeting to register)
 - Email pwalter@orcity.org (deadline to submit written testimony via email is 3:00 PM on the day of the meeting)
-
-

1. CALL TO ORDER AND ROLL CALL

2. PRESENTATION

- a. Canyon's Edge Farm & Forest Project presentation by Rick Reynolds

3. DISCUSSION ITEMS

- a. Update NRC work plan for 2025-2027

4. COMMUNICATIONS

- a. Communications from Staff

5. ADJOURNMENT

PUBLIC COMMENT GUIDELINES

Complete a Comment Card prior to the meeting and submit it to the clerk. When the Chair calls your name, proceed to the speaker table, and state your name and city of residence. Each speaker is given 3 minutes to speak. As a general practice, the committee does not engage in discussion with those making comments. Complaints shall be addressed at the department level prior to addressing the committee.

ADA NOTICE

The location is ADA accessible. Hearing devices may be requested from the City Recorder prior to the meeting. Individuals requiring other assistance must make their request known 48 hours preceding the meeting by contacting the City Recorder's Office at 503-657-0891.

Agenda Posted at City Hall, Pioneer Community Center, Library, City Website.

Video Streaming & Broadcasts: The meeting is streamed live on the [Oregon City's website](#) and available on demand following the meeting. The meeting can be viewed on Willamette Falls Television channel 28 for Oregon City area residents as a rebroadcast. Please contact WFMC at 503-650-0275 for a programming schedule.



Canyon's Edge
Farm & Forest

STREAM~N
Center

Alden St.
Oregon City



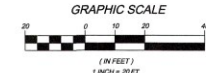
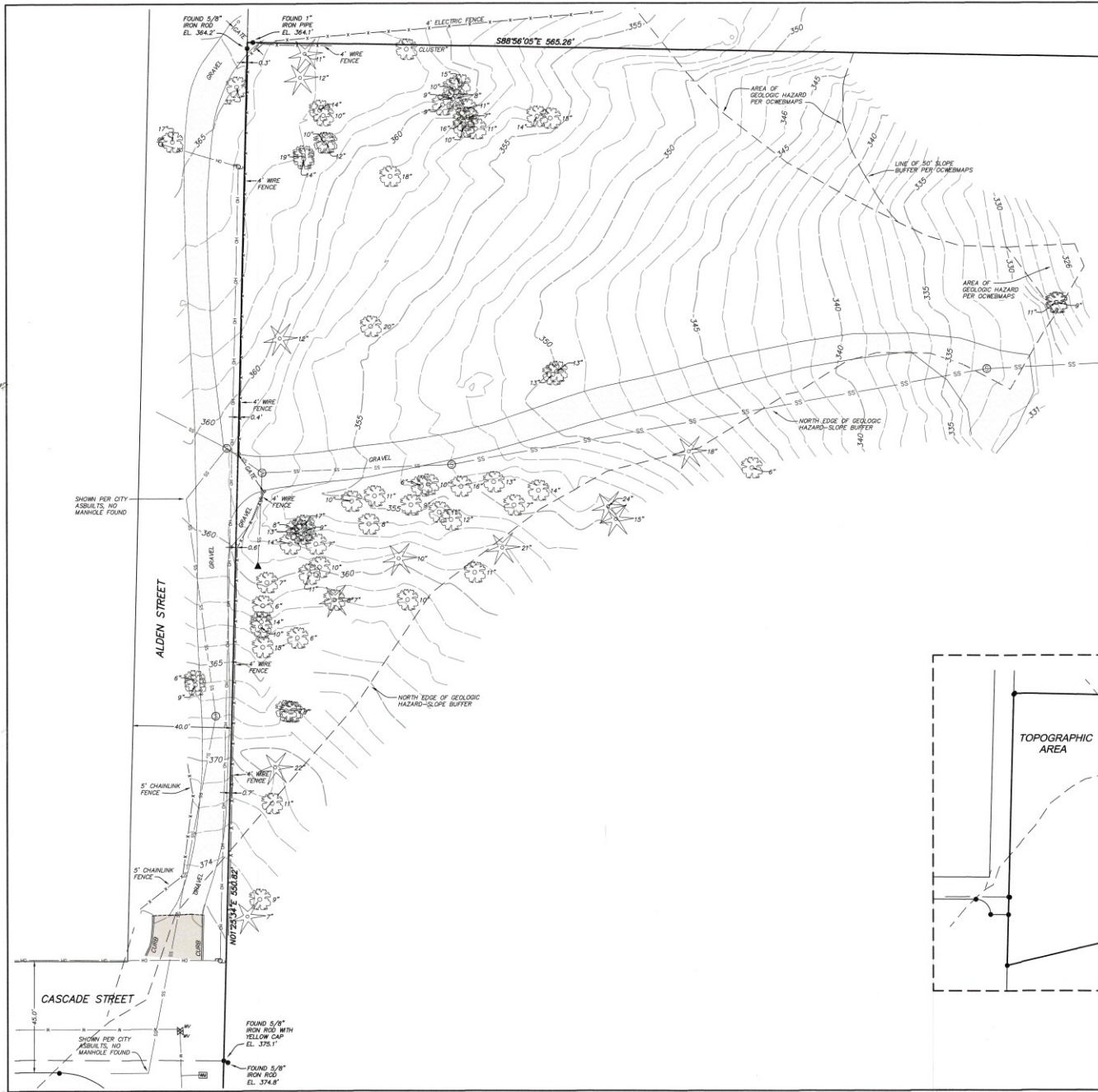


164 ft



EXISTING CONDITIONS MAP

LOCATED IN THE
S.W. 1/4 SECTION 32, T.25S., R.2E., W.M.
CITY OF OREGON CITY, CLACKAMAS COUNTY, OREGON
UPDATED: APRIL 2, 2024 SCALE 1"=20'



SIGNED ON 04-12-24
REGISTERED PROFESSIONAL LAND SURVEYOR
OREGON
NOVEMBER 14, 2007
JAMES BURTON BROWN
60379
RENEWS: DECEMBER 31, 2025

SURVEY NOTES:

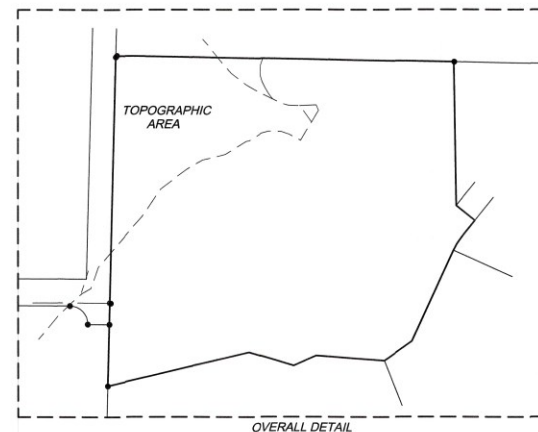
THE VERTICAL DATUM FOR THIS SURVEY IS BASED UPON A STATIC GPS OBSERVATION OF LOCAL CONTROL POINTS, PROCESSED THROUGH OPUS. DATUM IS NAVD 83.
PROPERTY LINES SHOWN HEREON ARE APPROXIMATE IN NATURE AND SHOULD BE TREATED AS SUCH. NO RESOLUTION WAS PERFORMED. LINES SHOWN ARE FROM EXISTING SURVEY DATA AND EXISTING PARCEL MAP DATA.
THE BASIS OF BEARINGS FOR THIS SURVEY IS PER MONUMENTS FOUND AND HELD PER THE PLAT OF "FOREST HEIGHTS LIMITED", RECORDS OF CLACKAMAS COUNTY.
NO WARRANTIES ARE MADE AS TO MATTERS OF UNWRITTEN TITLE, SUCH AS ADVERSE POSSESSION, ESTOPPEL, ACQUESCENCE, ETC.
NO TITLE REPORT WAS SUPPLIED OR USED IN THE PREPARATION OF THIS MAP.

UTILITY NOTES:

THE UNDERGROUND UTILITIES AS SHOWN ON THIS MAP ARE SHOWN BASED ON A COMBINATION OF INFORMATION, INCLUDING VISIBLE ABOVE GROUND STRUCTURES, AVAILABLE AS BUILT AND GIS MAPPING FROM LOCAL JURISDICTIONS.
THE SURVEYOR MAKES NO GUARANTEE THAT THE UNDERGROUND UTILITIES SHOWN COVER ALL SUCH UTILITIES IN THE AREA, EITHER IN SERVICE OR ABANDONED.
THE SURVEYOR FURTHER DOES NOT WARRANT THAT THE UNDERGROUND UTILITIES ARE IN THE EXACT LOCATION INDICATED, ALTHOUGH HE DOES CERTIFY THAT THEY ARE LOCATED AS ACCURATELY AS POSSIBLE FROM INFORMATION AVAILABLE.
THE SURVEYOR HAS NOT PHYSICALLY LOCATED THE UNDERGROUND UTILITIES. SURFACE AND ENVIRONMENTAL CONDITIONS WERE NOT EXAMINED OR CONSIDERED AS A PART OF THIS SURVEY. NO STATEMENT IS MADE CONCERNING THE EXISTENCE OF UNDERGROUND OVERHEAD CONTAINERS OR FACILITIES THAT MAY AFFECT THE USE OR DEVELOPMENT OF THIS TRACT. THIS SURVEY DOES NOT CONSTITUTE A TITLE SEARCH BY SURVEYOR.
INVERT ELEVATIONS AND PIPE SIZES SHOWN ARE APPROXIMATE ONLY, BASED ON FIELD OBSERVATIONS AS WELL AS AVAILABLE AS-BUILT DATA. ALL PIPE SIZES SHALL BE FIELD VERIFIED BY THE OWNER, ENGINEER, CONTRACTOR, AND GOVERNING AGENCY PRIOR TO ANY CONSTRUCTION ACTIVITY. SURVEYOR DOES NOT WARRANT THE ACCURACY OF ANY PIPE SIZES SHOWN ON THIS SURVEY.

LEGEND:

- Some Symbols shown may not be used on map
- | | | |
|---------------------|--|------------------------|
| 12" DECIDUOUS TREE | STORM SEWER MANHOLE | SP TRAFFIC SIGNAL POLE |
| 24" EVERGREEN TREE | CATCH BASIN | UTILITY POLE |
| DEAD TREE | CURB INLET | LIGHT POLE |
| STORM SEWER MANHOLE | AREA DRAIN | GUY WIRE |
| ELECTRIC BOX | DITCH INLET | ELECTRIC BOX |
| ELECTRIC METER | SANITARY SEWER CLEANOUT | ELECTRIC METER |
| TRANSFORMER | SANITARY SEWER MANHOLE | TRANSFORMER |
| ELECTRIC RISER | FIRE HYDRANT | ELECTRIC RISER |
| HEAT PUMP | WATER MANHOLE | HEAT PUMP |
| GATE POST | WATER METER | GATE POST |
| CABLE TV BOX | WATER VALVE | CABLE TV BOX |
| CABLE TV RISER | HOSE BIB | CABLE TV RISER |
| OVERHEAD LINE | IRRIGATION CONTROL VALVE | OVERHEAD LINE |
| GAS LINE | GAS VALVE | GAS LINE |
| ELECTRICAL LINE | GAS METER | ELECTRICAL LINE |
| COMMUNICATIONS LINE | MAILBOX | COMMUNICATIONS LINE |
| SANITARY SEWER LINE | UTILITY RISER | SANITARY SEWER LINE |
| STORM DRAIN LINE | UTILITY BOX | STORM DRAIN LINE |
| WATER LINE | TELEPHONE MANHOLE | WATER LINE |
| FENCE LINE | TELEPHONE RISER | FENCE LINE |
| HANDRAIL | STORM OUTFALL | HANDRAIL |
| ARBORVITAE ROW | SIGN | ARBORVITAE ROW |
| CONCRETE SURFACE | BOLLARD | CONCRETE SURFACE |
| ASPHALT SURFACE | FOUND MONUMENT | ASPHALT SURFACE |
| FOUND GREEN STATE | DOWN SPOUT TO STORM SYSTEM | FOUND GREEN STATE |
| | DOWN SPOUT TO SPLASH GUARD OR GROUND W/ PIPE DIRECTION | |
| | COLUMN | |



OVERALL DETAIL

CENTERLINE CONCEPTS
LAND SURVEYING, INC.
19376 MOLALLA AVE., SUITE 120
OREGON CITY, OREGON 97145
PHONE: 503.650.0189 FAX: 503.650.0189
PLOTTED: M:\PROJECTS\REYNOLDS-ALDEN_STUDIOS\C30.dwg

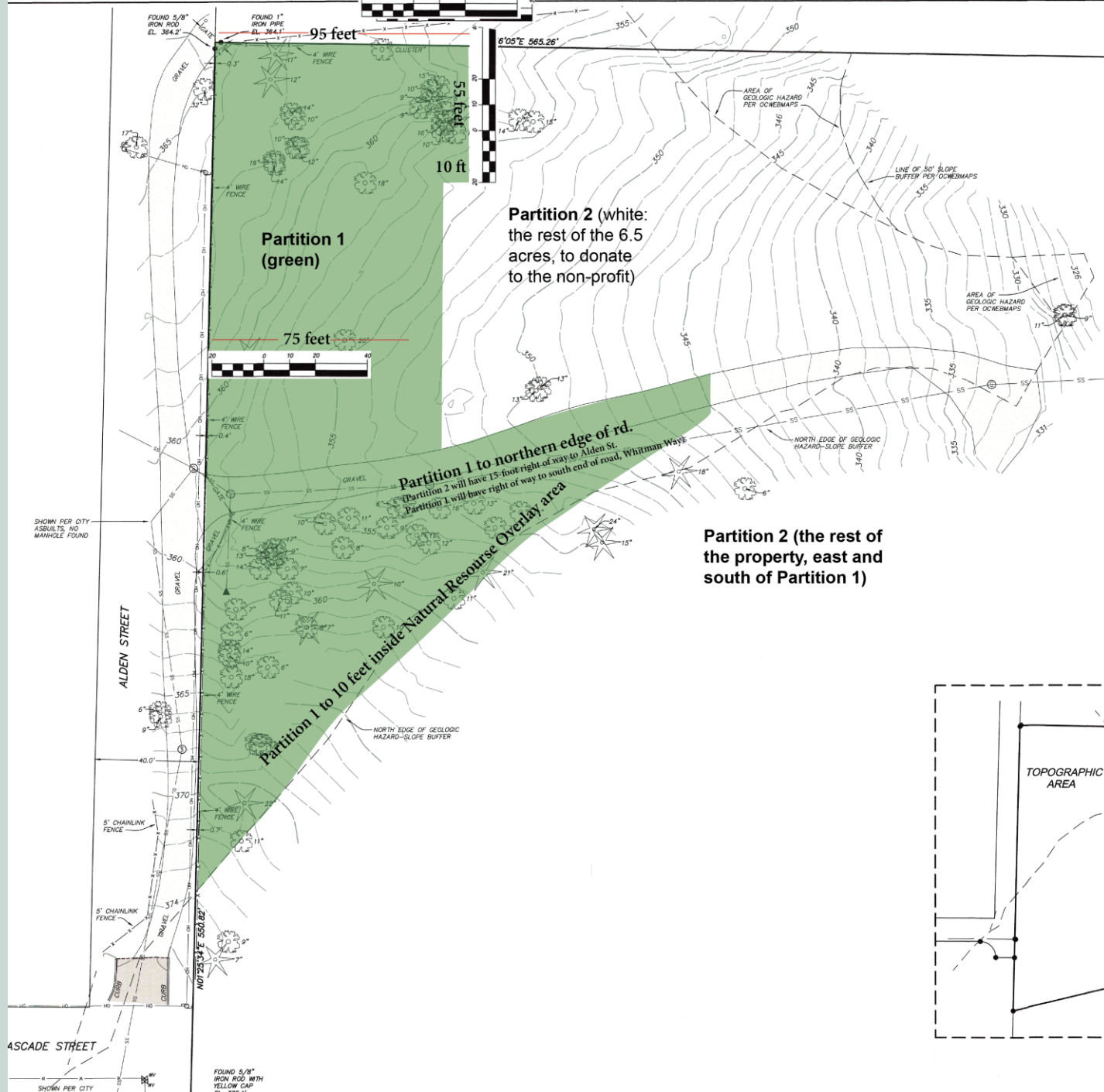






EXISTING CONDI

LOCATED IN THE
S.W. 1/4 SECTION 32, T.2S.
CITY OF OREGON CITY, CLATSOP COUNTY.
UPDATED: APRIL 2, 2024



Partition 2 (white):
the rest of the 6.5
acres, to donate
to the non-profit

Partition 2 (the rest of
the property, east and
south of Partition 1)

Partition 1 to northern edge of rd.
Partition 2 will have 15-foot right-of-way to Alden St.
Partition 1 will have right of way to south end of road, Whitman Way

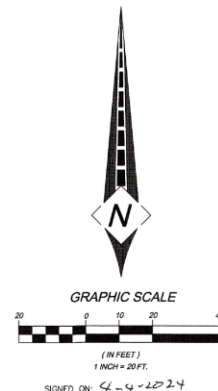
Partition 1 to 10 feet inside Natural Resource Overlay area

SURVEY NOTES:

THE VERTICAL DATUM FOR THIS SURVEY IS OBSERVATION OF LOCAL CONTROL POINTS, 4 IS NAVD 88.
PROPERTY LINES SHOWN HEREON ARE APPROPRIATELY TREATED AS SUCH UNLESS QUALIFIED FROM EXISTING SURVEY DATA AND EXISTING RECORDS.
THE BASIS OF BEARINGS FOR THIS SURVEY HELD PER THE PLAT OF FOREST HEIGHTS COUNTY.
NO WARRANTIES ARE MADE AS TO MATTERS OF ADVERSE POSSESSION, ESTOPPEL, ACQUISITION, OR TITLE REPORT WAS SUPPLIED OR USED.

UTILITY NOTES:

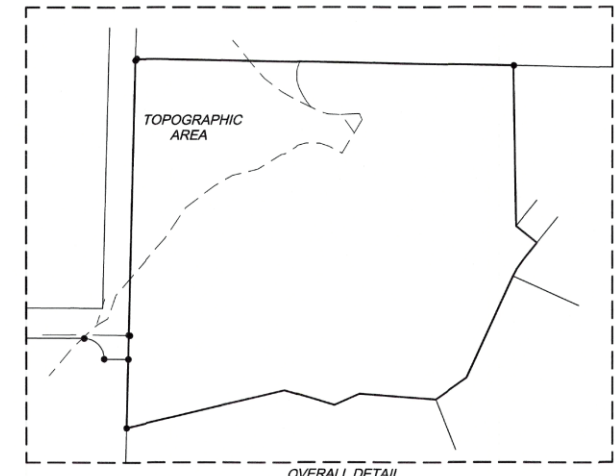
THE UNDERGROUND UTILITIES AS SHOWN ON THIS SURVEY ARE A COMBINATION OF INFORMATION INCLUDING THAT AVAILABLE AS BUILT AND GIS MAPPING PROVIDED BY THE SURVEYOR.
THE SURVEYOR MAKES NO GUARANTEE THAT THE SHOWN UTILITIES ARE ACCURATELY LOCATED.
THE SURVEYOR FURTHER DOES NOT WARRANT THE EXACT LOCATION INDICATED, AS THEY ARE LOCATED AS ACCURATELY AS PG AVAILABLE.
THE SURVEYOR HAS NOT PHYSICALLY LOCATED SUBSURFACE AND ENVIRONMENTAL CONDITIONS AS A PART OF THIS SURVEY. NO STATEMENT OF UNDERGROUND OR OVERHEAD CONTAINERS USE OR DEVELOPMENT OF THIS TRACT. THIS IS SEARCH BY SURVEYOR.



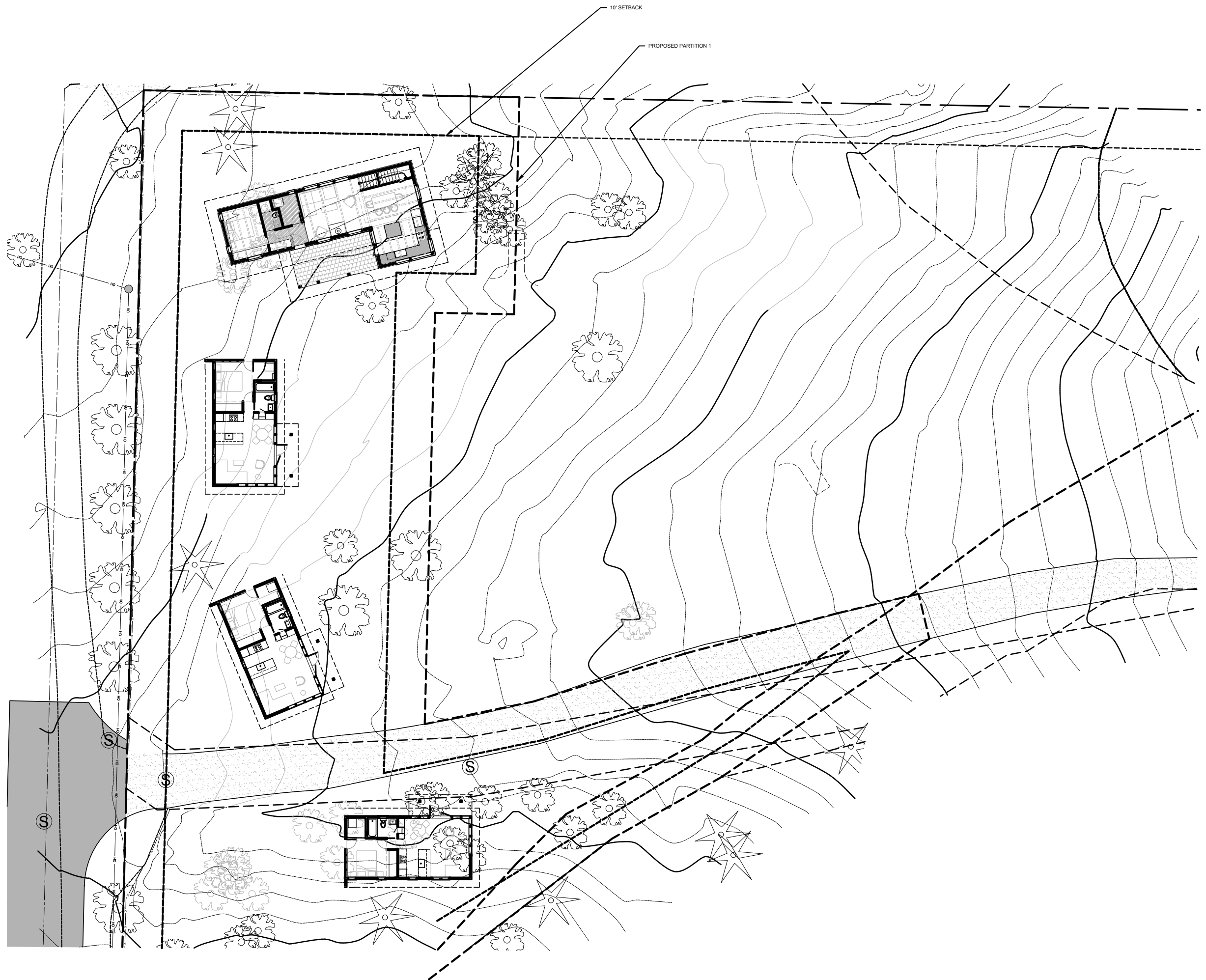
SIGNED ON: 4-4-2024
REGISTERED PROFESSIONAL LAND SURVEYOR
OREGON NOVEMBER 30, 2007 JAMES BURTON BROWN 60379
RENEWS: DECEMBER 31, 2025

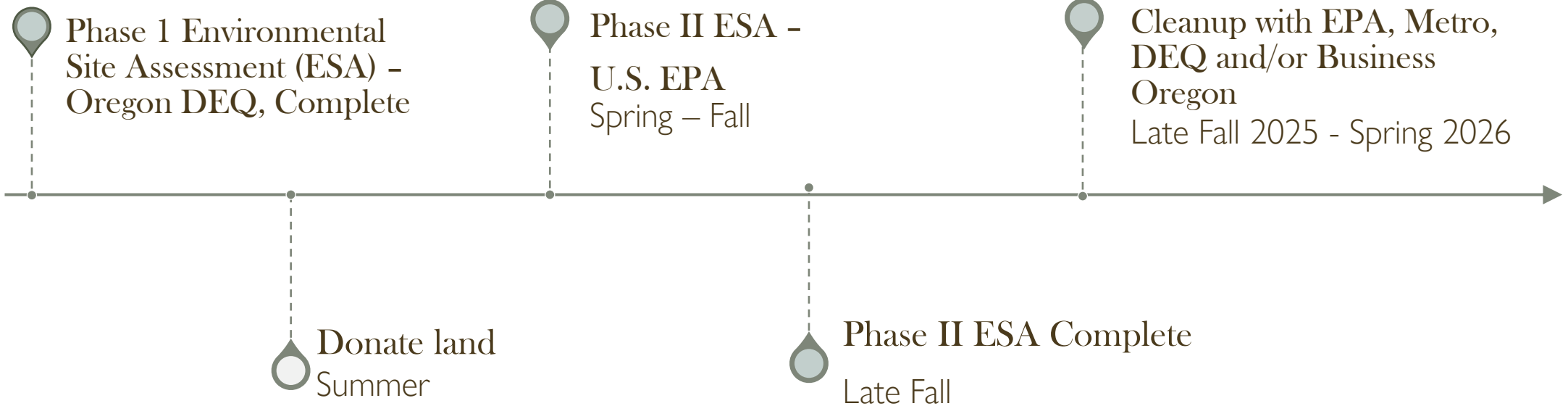
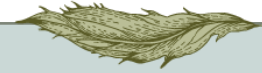
LEGEND:

- Some Symbols shown may not be used on this project.
- 12" DEODIOUS TREE
 - 24" EVERGREEN TREE
 - DEAD TREE
 - STORM SEWER MANHOLE
 - CATCH BASIN
 - CURB INLET
 - AREA DRAIN
 - DITCH INLET
 - SANITARY SEWER CLEANOUT
 - SANITARY SEWER MANHOLE
 - FIRE HYDRANT
 - WATER MANHOLE
 - WATER METER
 - WATER VALVE
 - HOSE BIB
 - IRRIGATION CONTROL VALVE
 - GAS VALVE
 - GAS METER
 - MAILBOX
 - UTILITY RISER
 - UTILITY BOX
 - TELEPHONE MANHOLE
 - TELEPHONE RISER
 - STORM OUTFALL
 - SIGN
 - BOLLARD
 - FOUND MONUMENT
 - DOWN SPOUT TO STORM SYSTEM
 - DOWN SPOUT TO SPLASH GUARD OR GROUND W/ PIPE DIRECTION
 - COLUMN



OVERALL DETAIL





STREAM~N TEAM

Environmental Service-Learning





STREAM~N

Center



Native Plants



Big-leaf Maples



Huckleberries

Wildlife



Oregon Ensatina
Salamander



Cedar Waxwing

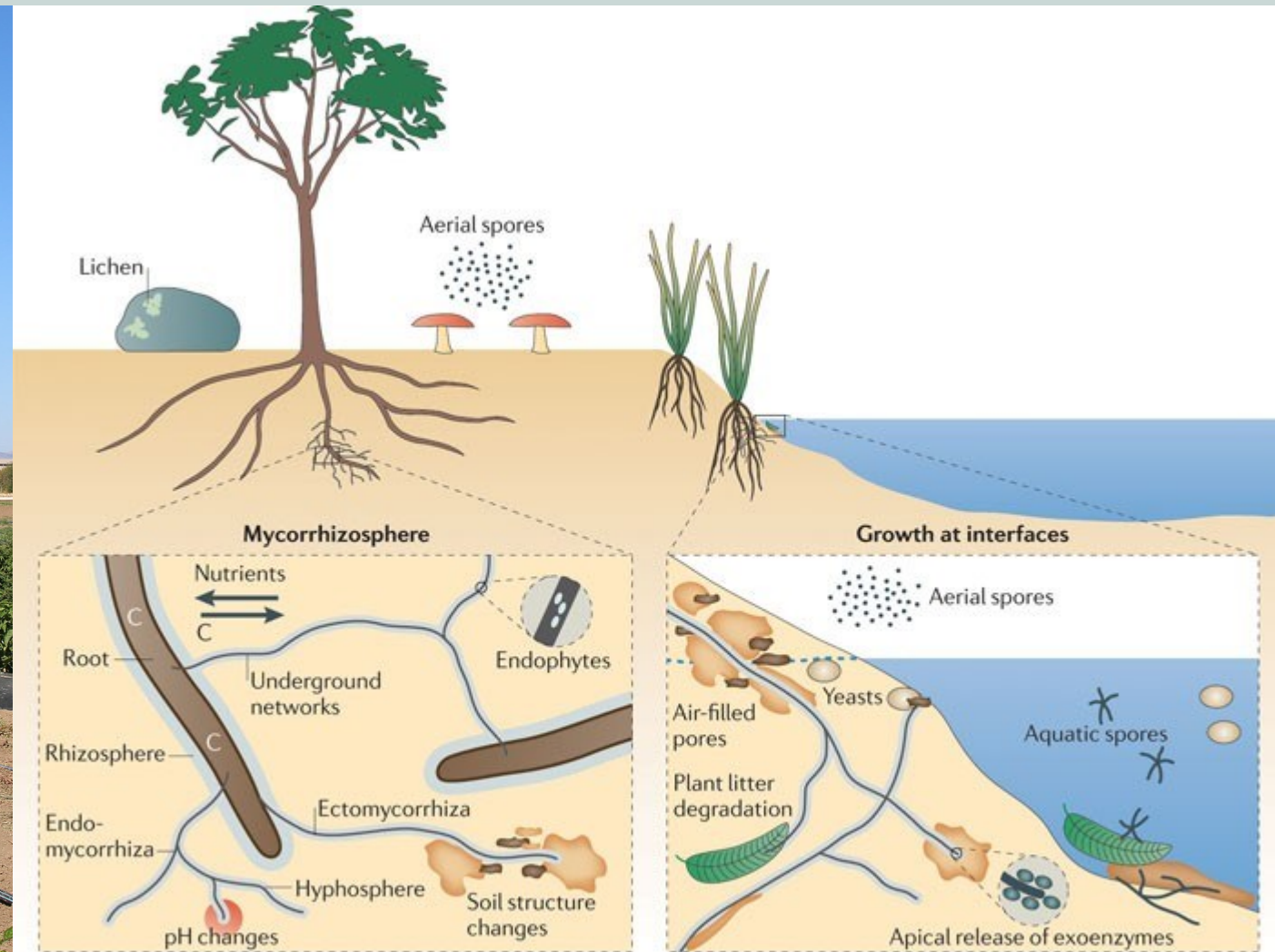


Red-legged
Frog



Great-horned Owl

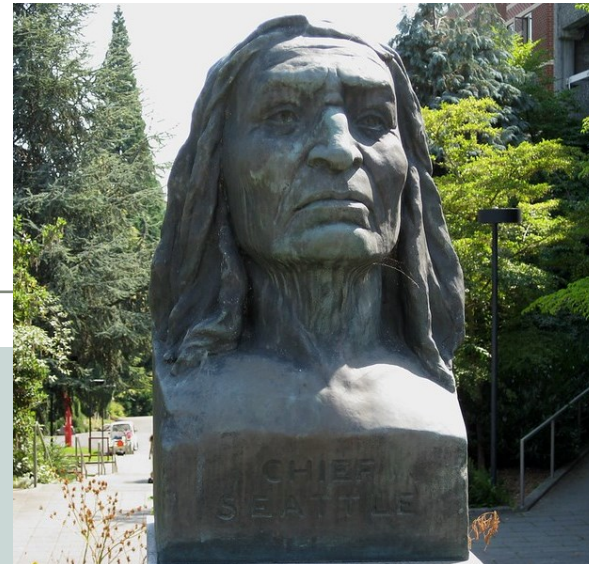
Research: Agrisolar, Food, Fungi, Carbon Storage, and More





“ The Earth does not belong to us:
we belong to the Earth.

Chief Seattle



”



Questions?





Thank you!

Rick & Krista Reynolds

503-380-4140

rick@engagingeverystudent.com



CITY OF OREGON CITY

625 Center Street
Oregon City, OR 97045
503-657-0891

Staff Report

To: Natural Resources Committee **Agenda Date:** May 13, 2025
From: Pete Walter, Planning Manager

SUBJECT:

Update NRC work plan for 2025-2027

STAFF RECOMMENDATION:

Review progress on the 2025-2027 work plan based on direction from City Commission

EXECUTIVE SUMMARY:

The NRC work plan is a working guide for what the Committee can realistically accomplish given City Commission goals for the biennium that apply to the NRC's purpose.

City Commission 2025-2027 priorities related to NRC:

- Strive to become recognized as a Bee City USA and increase high-quality habitat for pollinators, in particular native bees
- Maintain our Tree City USA designation
- Identify and apply for grant funding to complete a tree canopy assessment and determine the need and costs associated with a City Arborist

An additional project that would be very good to work on is an update of the city's various plant lists, specifically, the nuisance plant list, the native plant list, and the creation of a new parking lot recommended tree list with planting recommendations.

BACKGROUND:

Staff recommend that committee members review the attachments and be prepared to discuss the work plan based on the City Commission priorities.

NEXT STEPS:

OPTIONS:

Oregon City Natural Resources Committee 2023-2025 Work Plan

NRC Responsibility #1:

Promote Community Involvement in Natural Resources Conservation

1. Support a public tree inventory with volunteer participation for city properties, parks, street trees, school properties and other public lands.
2. Communicate regularly with Neighborhood Associations, Citizen Involvement Committee and the business community to promote programs such as the heritage tree program and arbor day.
3. Improve awareness through the city website, brochures, QR code signage, and social media for awareness and interpretation of local natural and geological features, trails, stormwater facilities, watersheds and sites. Coordinate with city efforts to enhance tourism. This would emphasize local knowledge and provide interpretative signs for people to learn about things like birding, swift migrations, heritage trees, etc. We can use laminated signs that lead to the Oregon City website. Give people an easy way to learn.
4. Continue to strengthen and encourage participation in the Heritage Tree Program through brochures, Informational signs for trees, \$\$\$ for incentives, site visits, further outreach and social media.
5. Work with property owners to voluntarily seek heritage tree designation within the Thimble Creek Concept Plan area.
6. Support city partnerships with Home Owner Associations (HOAs), Metro and Greater Oregon City Watershed Council, Oregon City Parks Foundation and other groups for habitat improvement projects within the Urban Growth Boundary.
7. Support partnerships with Oregon Heritage Tree Council and Oregon Community Trees.

NRC Responsibility #2:

Initiate recommendations and review updates to the City's comprehensive plan, codes and policy as they relate to statewide Planning Goals that are integral to our mission.

1. Provide input to the City Commission on amendments to the City's tree protection and removal codes.
2. Support a coordinated strategy for invasive species management, such as encouraging City participation in the Clackamas County Integrated Pest Management (IPM) program. Look at the City of Eugene Integrated Pest Management (IPM) program model as an example of a way to integrate IPM into city operations.
3. Improve public outreach and information about invasive plants.
4. Amend city resolution nuisance and native plant lists to reference regionally accepted and regularly updated plant lists from Clackamas Soil and Water District, Metro, Portland, and Willamette Native Plant List.
5. With the Public Works department, explore feasibility of offering reduced stormwater rates in return for planting trees in the right-of-way to intercept rainfall, reduce run-off and improve stormwater quality.
6. Support the City's application to and participation in the Bee City USA program through the Xerces Society for Invertebrate Conservation.

7. Promote public awareness of ways to promote and preserve invertebrate habitat through educational events such as booths at a Spring Resource Fair, the city website, Trail News, the city Facebook page and other social media.
8. Promote public awareness of the dangers of pesticide use, and cost savings associated with reduced pesticide application and reduced landscape maintenance.

NRC Responsibility #3:

Receive Notice and Comment on Land Use Applications and Projects within City Limits and the Urban Growth Boundary

1. Review and comment on Type III applications to vary from the adopted standards of the Natural Resources Overlay District, Flood Management Overlay District, and the Willamette River Greenway Overlay District.

NRC Responsibility #4: Conduct Orderly Meetings that result in Good Communications

1. Maintain and Update a list of Natural Resources Committee priorities and activities to share with Planning Commission and City Commission.

NRC Responsibility #5:

Coordinate with the Parks and Recreation Advisory Committee (PRAC) and Planning and City Commissions on at least an annual basis that results in good communication and mutually beneficial results.

1. Strengthen coordination with PRAC and parks staff through regular interaction and attendance at PRAC meetings.
2. Support funding initiatives and grant applications for parks and open space.
3. Invite Parks staff to attend NRC meetings.

Natural Resources Committee 2024 Annual Report

Meetings

The committee met 9 times in 2024, with a joint meeting with the Parks and Recreation Advisory Committee in October. In June 2024 the Committee decided to hold regular meetings on every other month rather than monthly.

Starting in March the committee returned to hybrid meetings instead of just Zoom, and we are now meeting in the Community Room at the Community Development Department at 695 Warner Parrott Road, which is much more convenient.

Membership

Currently the committee has 5 positions filled but hopes to be officially back up to seven members with the anticipated appointments of Emily Lisborg and William Foster. Thanks to Doug Neeley for coming back to the committee to assist us – Doug- you are always welcome to our meetings even if you are no longer an official committee member, your experience and wisdom is a huge asset to the committee and community at large.

Our current participating members are

- Brian Kvisler
- Monica Ann Stone
- Dakota Hufford
- Samantha Wolf
- Dave Trotter
- Doug Neeley
- Emily Lisborg

Our 2025 officers are:

- Chair – Samantha Wolf
- Vice-Chair – Brian Kvisler
- Secretary – Dakota Hufford

Discussion Items and Decisions

NRC business began in January 2024 with a discussion about Tree Removal and Sidewalk Mobility / with Josh Wheeler, our Assistant City Engineer present to give some background and explanation on the city's sidewalk repair requirements and how they impact tree removal.

At this same meeting Planning staff also provided a very helpful overview of various tree codes in the metro area and some of the fees associated with tree review and mitigation fees for Oregon City, Wilsonville, West Linn, Happy Valley, Lake Oswego, Milwaukie, Portland and Gresham. We

learned that urban forestry programs, administrative interpretations and effectiveness of enforcement vary widely between jurisdictions and that additional regulations (e.g. zoning, stormwater, overlay districts) may exist that are outside the scope of tree codes. Also, other urban forestry efforts for planting that are non-regulatory (e.g. Friends of Trees, Metro, SOLV), incentives, and tree planting programs may exist.

Tom Kissinger, Parks and Cemetery Manager, attended the February meeting and discussed tree planting projects for parks and pollinator projects, including input on the Pollinator Garden project at Clackamas River Trailhead and at the Swimming Pool. Thanks to Tom and Parks staff for initiating these projects and for allowing the community the chance to assist with their implementation.

We look forward to further collaboration with Parks staff and PRAC for items of mutual interest in 2025.

The committee spent much of 2024 discussing and crafting a tree canopy and tree code recommendation to the City Commission with the goal of strengthening existing tree regulations, preserving mature trees and tree canopy. This letter went through multiple revisions, informed by input from Public Works, Parks and Planning staff, and was discussed with PRAC. NRC presented that recommendation to the Commission at your recent February 5 meeting.

The committee has also discussed and is ready to support a public tree inventory and has discussed a variety of grant funding and technical sources that are available for such a project should the city commission decide to direct staff to undertake such a project.

The NRC continues to discuss and recommend participation in the Bee City USA program through the Xerces Society for Invertebrate Conservation and continues to advocate for the City's voluntary participation in Integrated Pest Management through this program and other programs.

At the joint PRAC / NRC meeting on October 9 the committee discussed the McLoughlin Boulevard Enhancement Project and got input from PRAC members on the public tree inventory and tree canopy policy recommendation letter.

The NRC also provided feedback on the Climate Friendly and Equitable Communities requirements.

The committee discussed the proposed street tree trimming clearance code amendments proposed by Public Works and had good discussion with Streets Maintenance staff Jayson Thorberg and Josh Wheeler, learning about the challenges of coordinating street sweeping, pavement maintenance, storm drainage with proper pruning heights over the street and sidewalk. NRC ultimately recommended approval of the amendments at our last Feb. 12 meeting.

The committee will be reviewing and brainstorming ideas for our Workplan for the remainder of the Biennium – 2025 at our next meeting.

Thank you for the opportunity to report to the Commission.



CITY OF OREGON CITY

625 Center Street
Oregon City, OR 97045
503-657-0891

Staff Report

To: Natural Resources Committee **Agenda Date:** May 13, 2025
From: Pete Walter, Planning Manager

SUBJECT:

Communications from Staff

STAFF RECOMMENDATION:

EXECUTIVE SUMMARY:

- Recap of Arbor Day
- Update on Climate Friendly and Equitable Communities parking code amendments
- Public Works items
- Parks and Recreation items

BACKGROUND:

NEXT STEPS:

OPTIONS: